

**Community Access
Television
2018 Board of Trustees**

Gary Berringer

Greg Benninger

Timothy Farley

Brain Frederick

Matthew Gerrans

Jim Gillespie

Danny Jones

Casimir Kwitowski

Christopher S. LaFuria

Chris Maras

David Paradiso

Nyima Porter

Carlos Ramirez II

William West

Greg Windle

Emeritus Members

James Darby

John Nesbit

Al Richardson

Susan Kinter

Daniel Gennaro



Business Hours

Monday: 8:30 a.m. to 7:00 p.m.

Tuesday: 8:30 a.m. to 7:00 p.m.

Wednesday: 8:30 a.m. to 7:00 p.m.

Thursday: 8:30 a.m. to 7:00 p.m.

Friday: 8:30 a.m. to 4:30 p.m.

- CATV is open for four evenings for weekly classes and production. .
- All appointments must be scheduled one week in advance and are subject to staff and facility availability.
- Anyone interested in membership should call us at **814-454-2226** and inquire about the next scheduled orientation.

Spectrum Channel 1021

**142 West 12th Street
Erie, PA 16501**

COMMUNITY ACCESS TELEVISION



EMPOWERING COMMUNITY VOICES AND VISIONS

Channel

1021

Facebook: @catverie
Twitter: @catverie
Website: www.catverie.org
Phone: 814-454-2226
Email: info@catverie.org

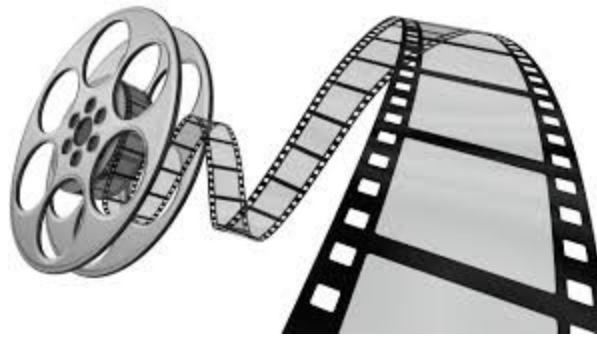
Television, For You, By You!

Our vision is to empower community voices and visions. Community Access Television (CATV) is a non-profit, membership-based public access television station offering community members and organizations the tools and training they need to produce their own programs for Spectrum, Channel 1021.

Public access television is unique. Getting off the ground in October 1997, the programming found on CATV is created by volunteer producers who are members of our community. CATV provides a unique and powerful venue for citizen expression in Erie, a forum for public discourse and dialogue, and a showcase for local issues and events. Our services and facilities are available to all members of the Erie community on a non-discriminatory, first-come, first-served basis.

Programs produced through CATV are the sole responsibility of the volunteer producers involved. Our staff provides assistance but does not influence content in any way.

In this way, the programs seen on Channel 1021 reflect the diverse interests and viewpoints of the Erie community.



How To Get Started:

Anyone who lives or works in the City of Erie, or resides in Erie County and belongs to an organization based in the City may become a member of Community Access Television. Both individual and organizational memberships are available.

In order to have access to TV production resources and training, a person must become a CATV member by:

1. Attending one of our orientation sessions on the first Thursday of every month.
2. Showing proof of residency in the City of Erie, or Erie County;
3. Signing a membership application;
4. Paying the current membership fee;
5. Taking courses in Studio Production or meeting with the CATV production coordinator to demonstrate proficiency.
6. Produce video content, then edit that content into a program for Channel 1021 and YouTube.

Services and Facilities

- Training and workshops
- Equipment
- Studio and control room
- HD and SD editing suites
- HD and SD field cameras and light kits
- Mobile production truck
- Production assistance
- Cable-casting. Anything produced using CATV equipment or facilities will be cablecast on Spectrum Channel 1021.
- Community bulletin board. This electronic bulletin board scrolls on Channel 1021 during non-program hours. Organizations may promote their non-commercial events on a first-come, first-served basis.
- Program sponsorship. Any member may submit an outside-produced series for cable-casting. Sponsors agree to take full responsibility for the content of the show and must include a statement of sponsorship at the beginning or end of the program.